

Cypherdog Encryption Single User macOS (CE SU V1.2.0)

INSTALLATION GUIDE AND REGISTRATION

1. Go to <https://www.cypher.dog/cdog-download-the-app-encryption/>, choose macOS version and click the button to download the CE SU application.

2. After downloading the installation file, run it – the installation process will start, follow the directions. During the installation process, you will be asked for CE destination directory, by default the path is “/Applications.” You need at least 211MB of free disc space. If your system restricts installations outside of the App Store, right-click (or Control+Click and select Open).

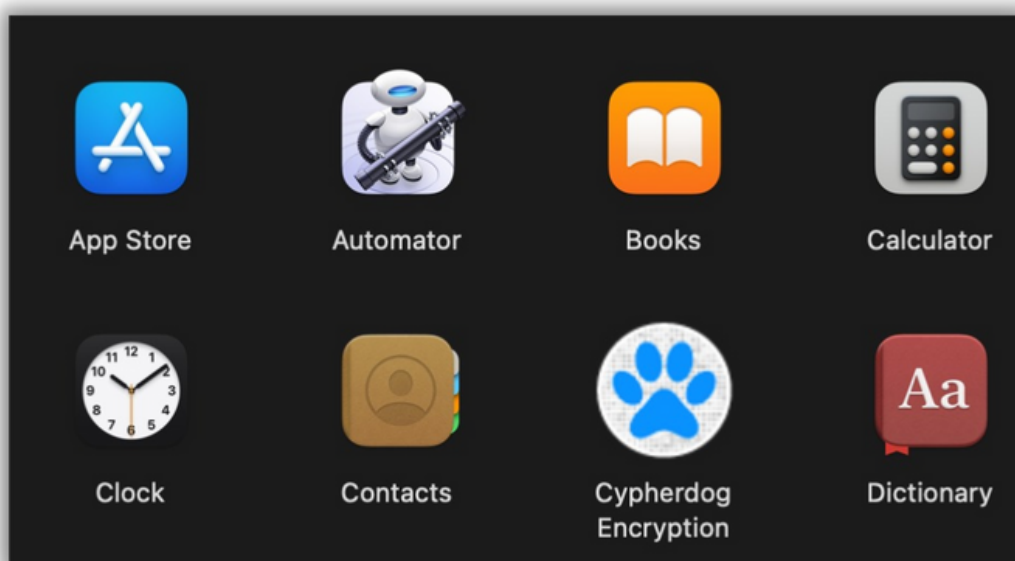





3. We recommend to associate Cypherdog encrypted files (.cdog) with your system. With this option, you will be able to decrypt files using the context menu.

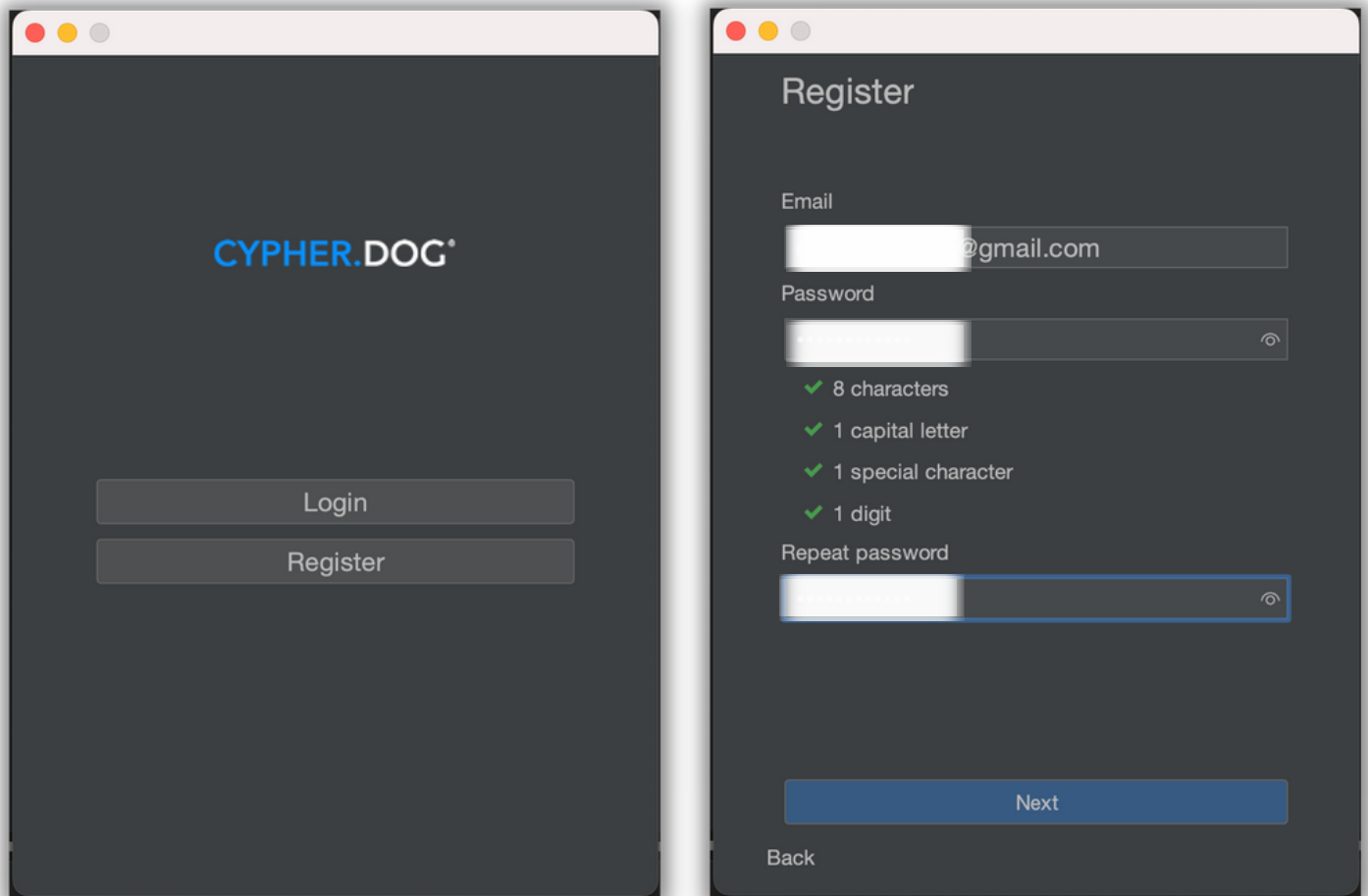


4. After the installation is done, click the finish button. A shortcut to the Cypherdog application you will find in the installation directory.





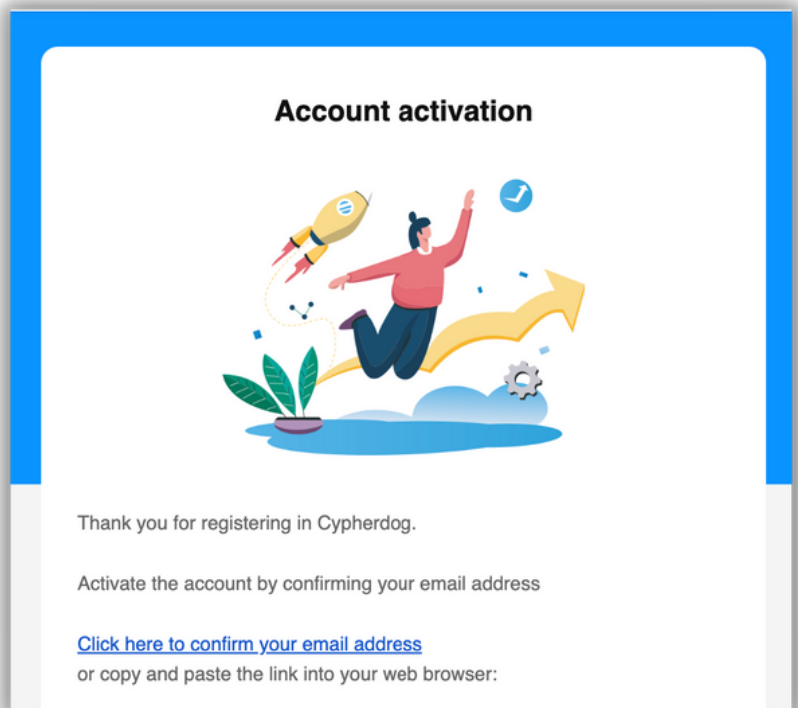
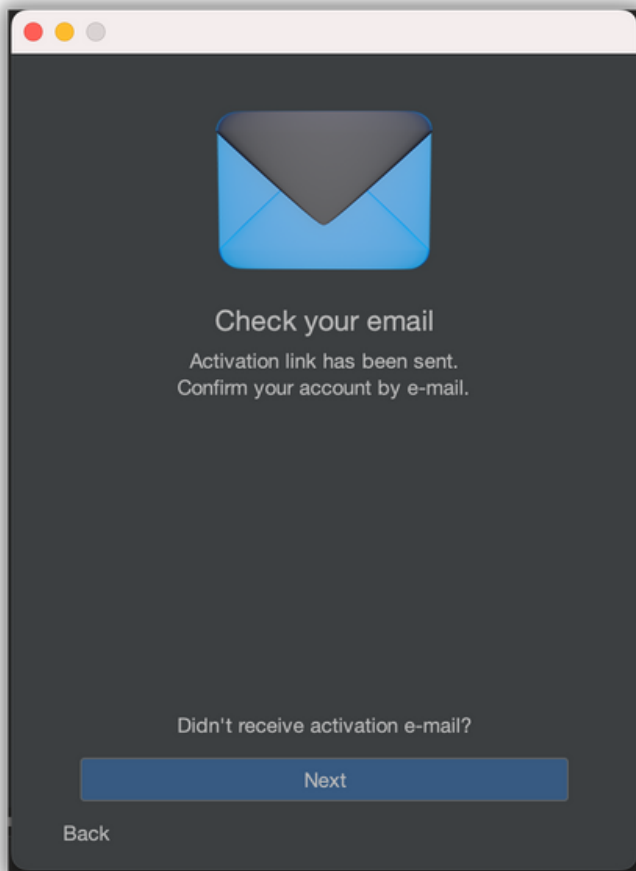
5. Run the application. If you didn't have an account before, click the register button, otherwise login to your account.



6. Enter the email address you want to register for and create a password for your Cypherdog account. The password requires at least 8 characters, including 1 capital letter, 1 digit and 1 special character (ex., #, %, &). Click "Next" button and check your email box, you should receive email with the account confirmation link (if you can't see the message, also check the SPAM folder).

Confirm your email address by clicking the link or copy the link and paste it to your web browser.

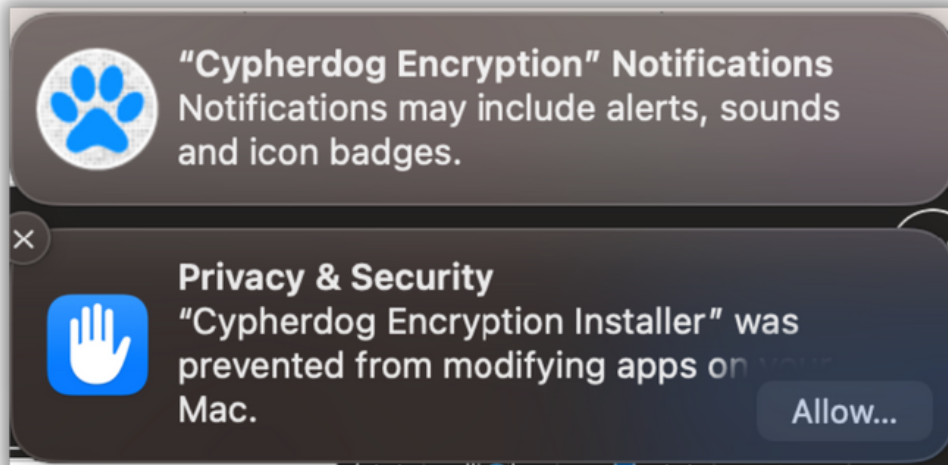


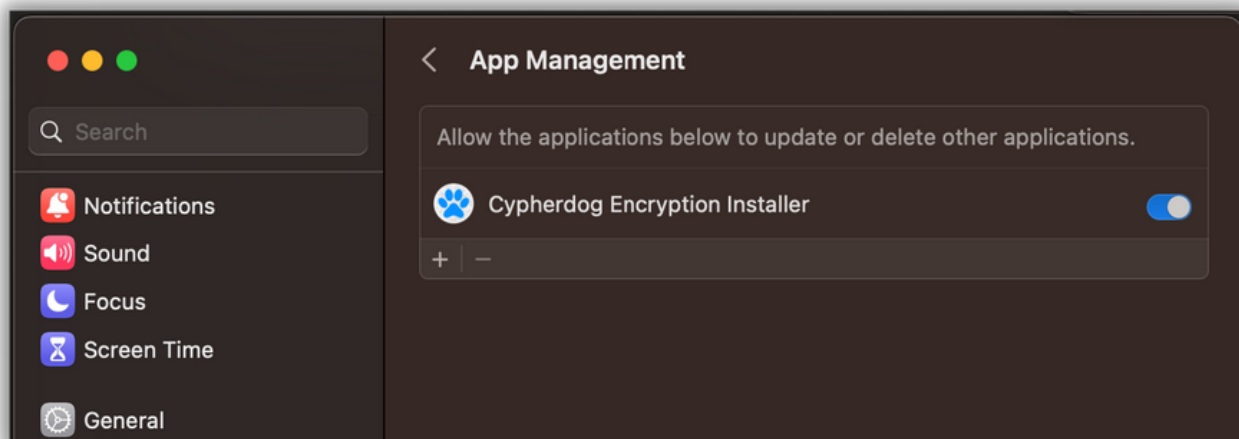


7. The next step is generating RSA keys for secure encryption of your messages. Set and confirm your secret password to unlock the key when required (length minimum of 8 characters, including small and big letters, one special character and one digit).

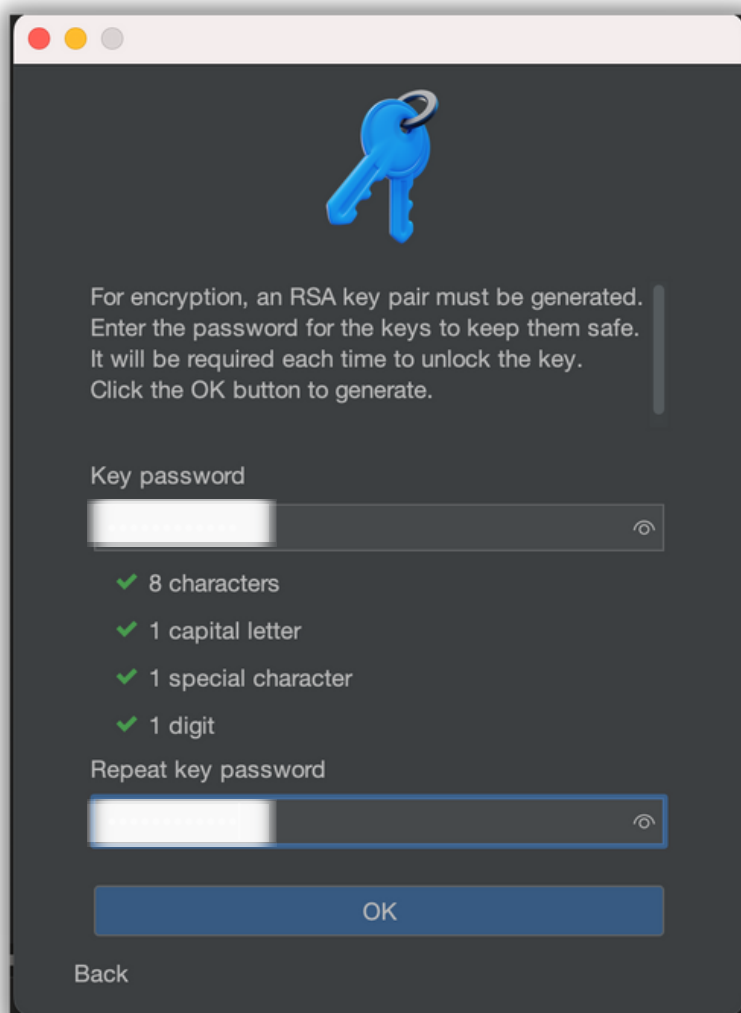
ATTENTION! The owner of the account must have confidence in being able to remember it. You can use any Password Manager or other methods to remember. Don't write your password on a stick on your monitor or laptop! You can recover your account in case you forget the key password, but keep in mind that you will lose all the data in Cypherdog apps associated with the account.

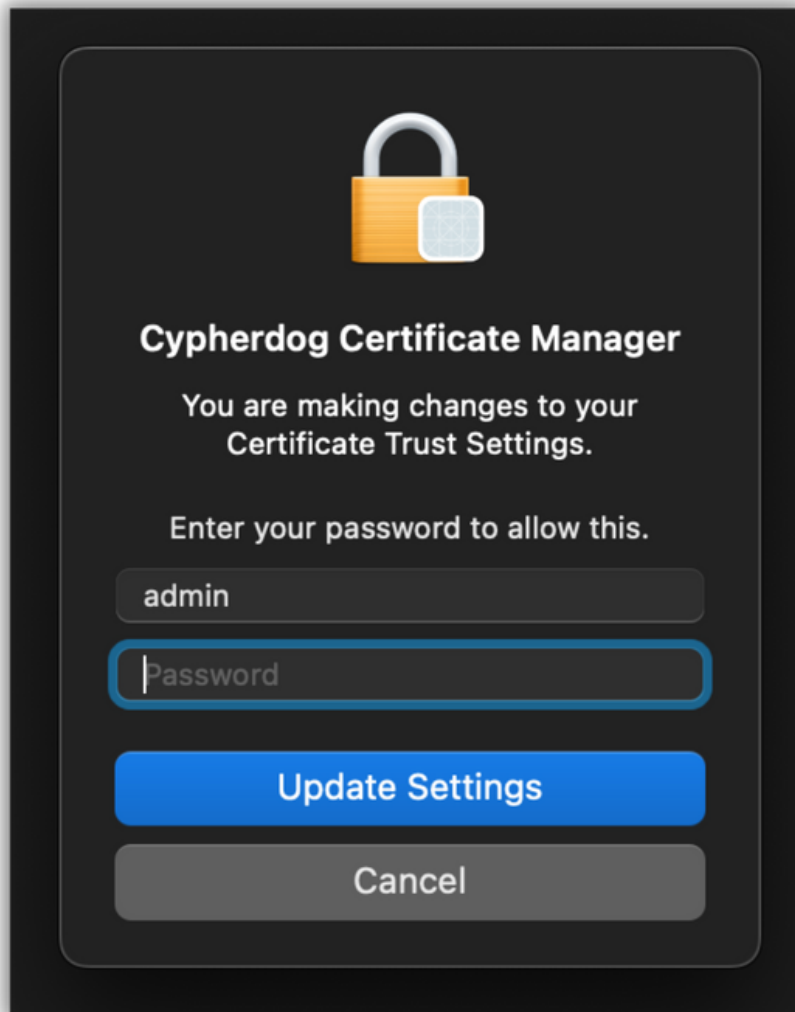
8. It is recommended that you allow Cypherdog to display notifications. Go to macOS settings and enable the corresponding button if necessary. You should also allow the CE app to update automatically.






9. After setting the password for the Private Key, click "OK". Certificate Manager will install the necessary certificates confirming the sender's identity in the system and will grant the sender a trust certificate. Accept system requests for installing Cypherdog Personal CA certificates and modifying the keychain (Keychain Access) and granting them trust permissions (Trust Settings).





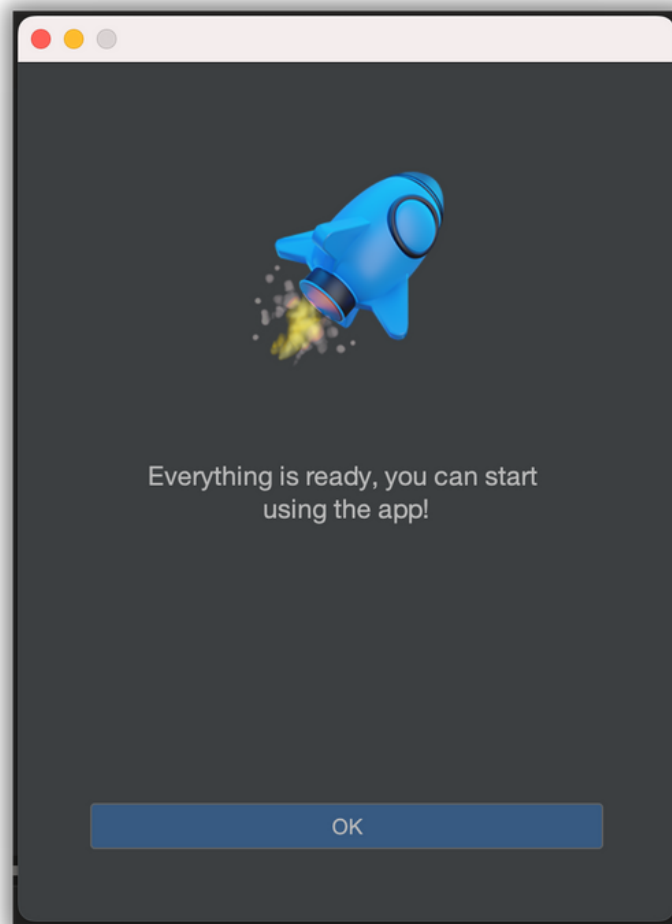
A dark-themed dialog box with a yellow padlock icon at the top center. The text inside reads: "Cypherdog Certificate Manager", "You are making changes to your Certificate Trust Settings.", "Enter your password to allow this.", "admin" (in a text field), "Password" (in a text field with a blue border), "Update Settings" (in a blue button), and "Cancel" (in a grey button).



A dark-themed progress dialog box with a title bar that says "Cypherdog Certificate Manager". The main text says "Installing Cypherdog Personal certificate...". Below the text is a blue progress bar that is nearly full. At the bottom center is an "OK" button.



13. You should see the information window on the screen below. You can start using the app. Congrats!



FEATURES AND USER MANUAL

1. The application features and options are available in the app's service, which can be found in the system tray. The blue dog paw icon should appear. If you cannot find it, try to run the service via shortcut in installed programs.

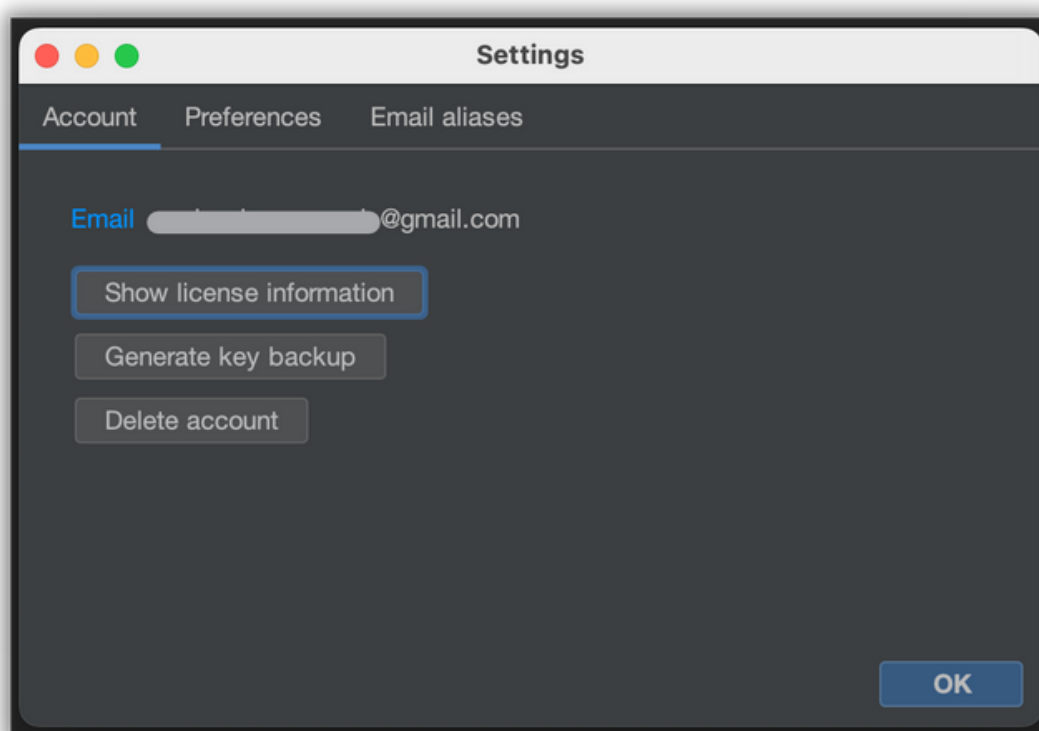
2. Mouse right button on the app icon in the system tray will show available options. If the icon color is white, you must select "Unlock private key" option. You will be asked for the password you previously set for your Private key during the registration process. The white color of the icon indicates that for security reasons you must unlock CE app to use its functionality. Once unlocked, the color of the icon will turn blue.



You will find the following menu options via the tray app icon:

B. **Settings.** The following tabs are currently available:


Account. You will find your license information and your registered email address.



- **Backup keys.** This option allows you to make a backup for your RSA Keys. Remember to keep it in a safe place. If you lose your password there is a possibility to recover your account, but you won't be able to decrypt previously encrypted emails and files.



Backup key




Generating a key backup requires confirmation with a login password.
Remember to keep the generated backup copy in a safe place.

Email

Password

Next

Backup key



Save As:

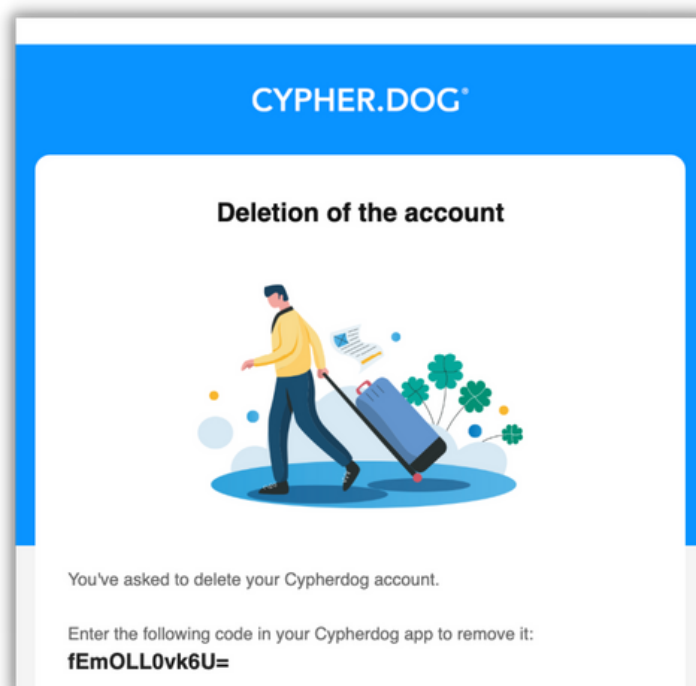
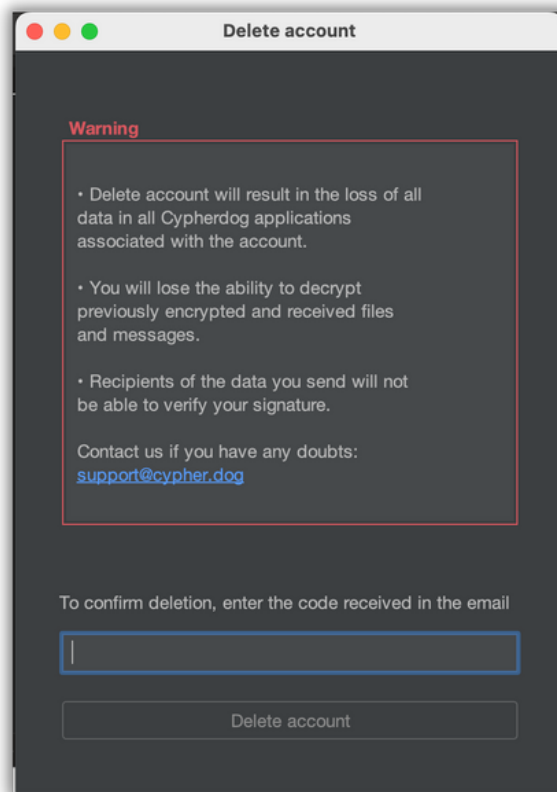
Tags:


Where:

Cancel Save

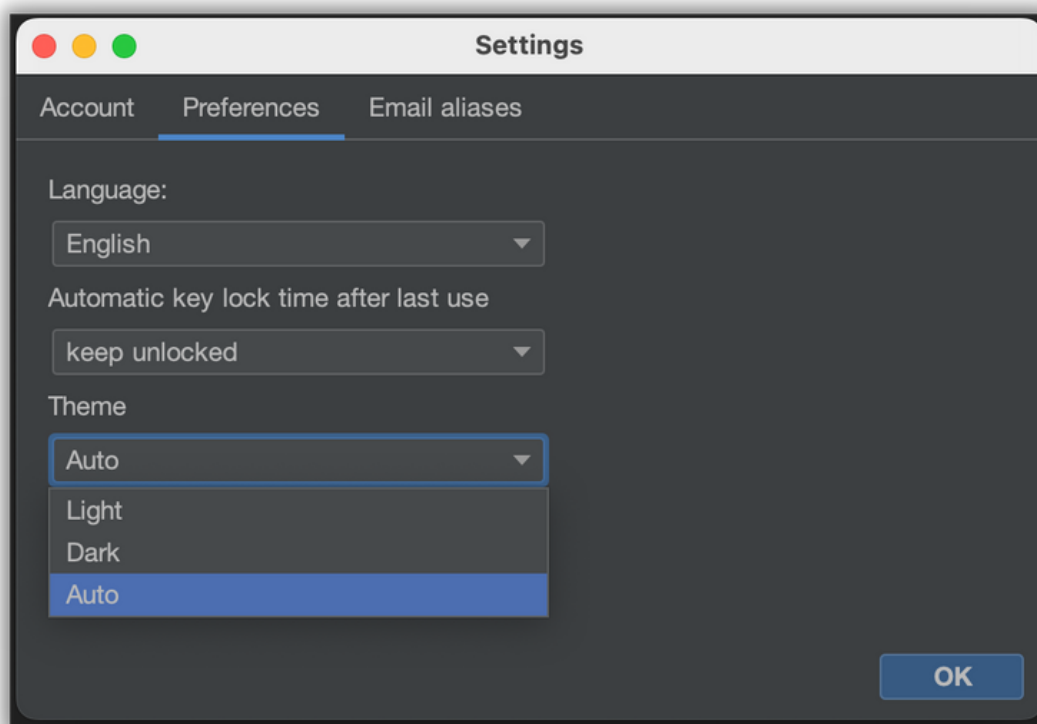


- **Delete account.** You can delete your CE account, but you will lose all data associated with the account, and you will not be able to decrypt previous messages.






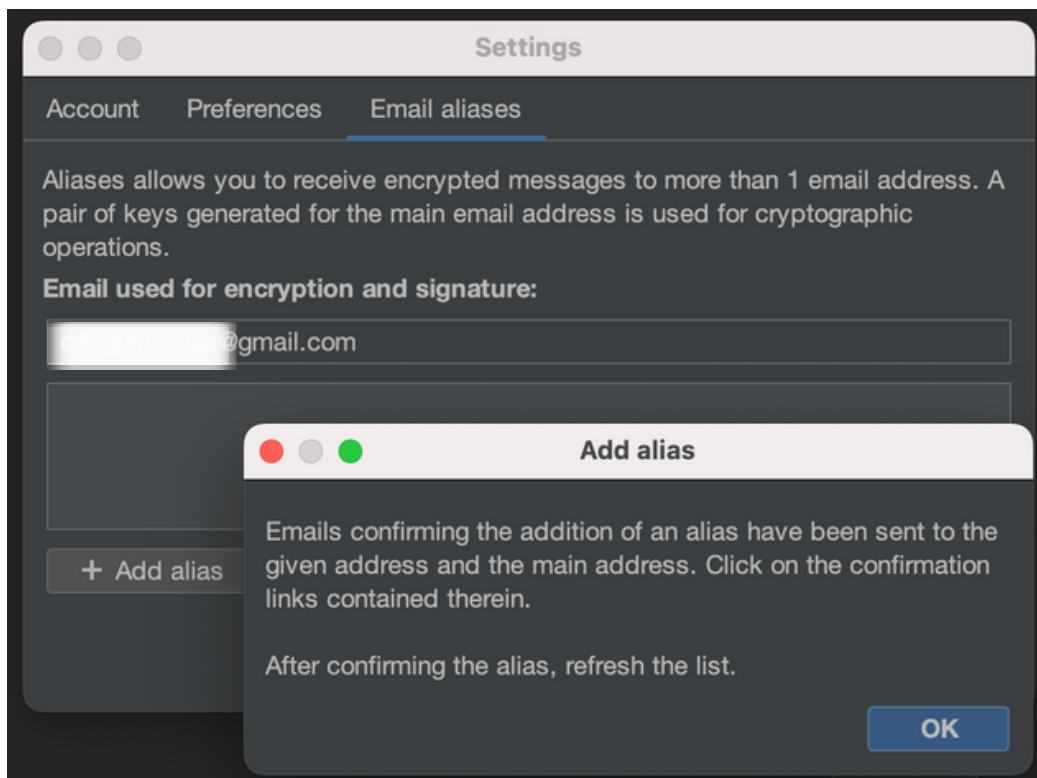
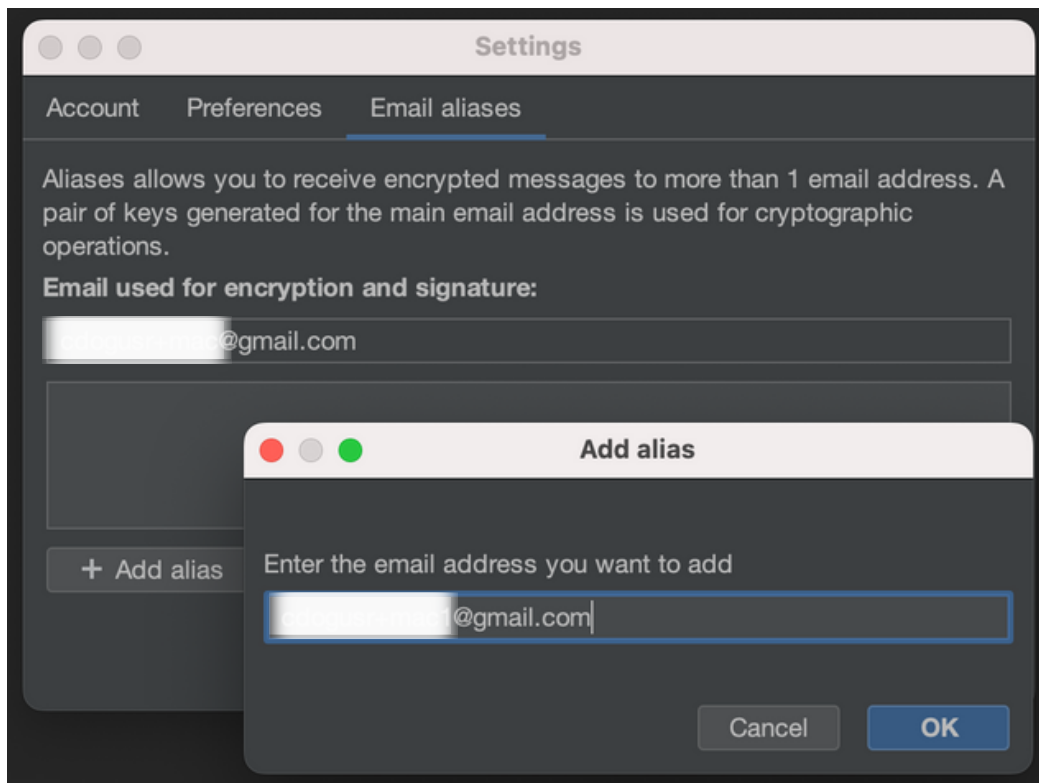
Preferences. You can choose preferred menu language from available ones.



- **Automatic key lock.** You can set the time after which your Private Key will be locked and will require the password to unlock it.
- **Theme.** You can choose preferred one.

Email aliases. Aliases allows you to receive encrypted messages to more than one email address. A pair of keys generated for the main email address is used for cryptographic operations. All you must do is click "+Add alias" button, enter an additional email and confirm both email addresses (the main one assigned to your account and the second one alias) by clicking the link in the received messages.





CYPHER.DOG®

Cypherdog Encryption



You want to add an e-mail alias @gmail.com in Cypherdog Encryption.

The process of adding this email alias was initiated from the account: @gmail.com

[Click here to confirm your email address](#)
or copy and paste the link into your web browser:

Settings


Account Preferences Email aliases

Aliases allows you to receive encrypted messages to more than 1 email address. A pair of keys generated for the main email address is used for cryptographic operations.

Email used for encryption and signature:

+ Add alias Refresh list Delete Set as default

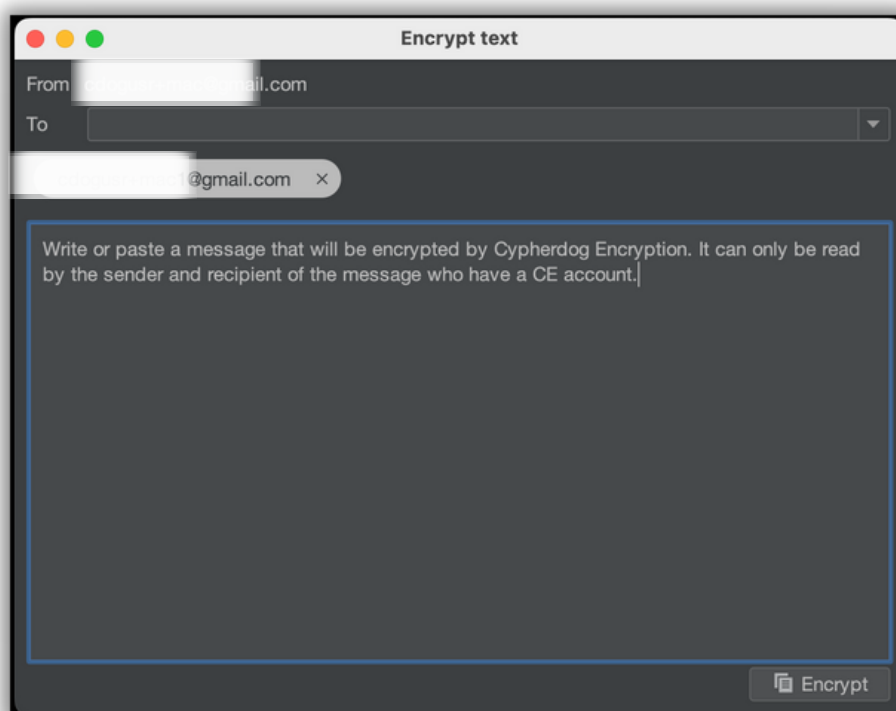
OK

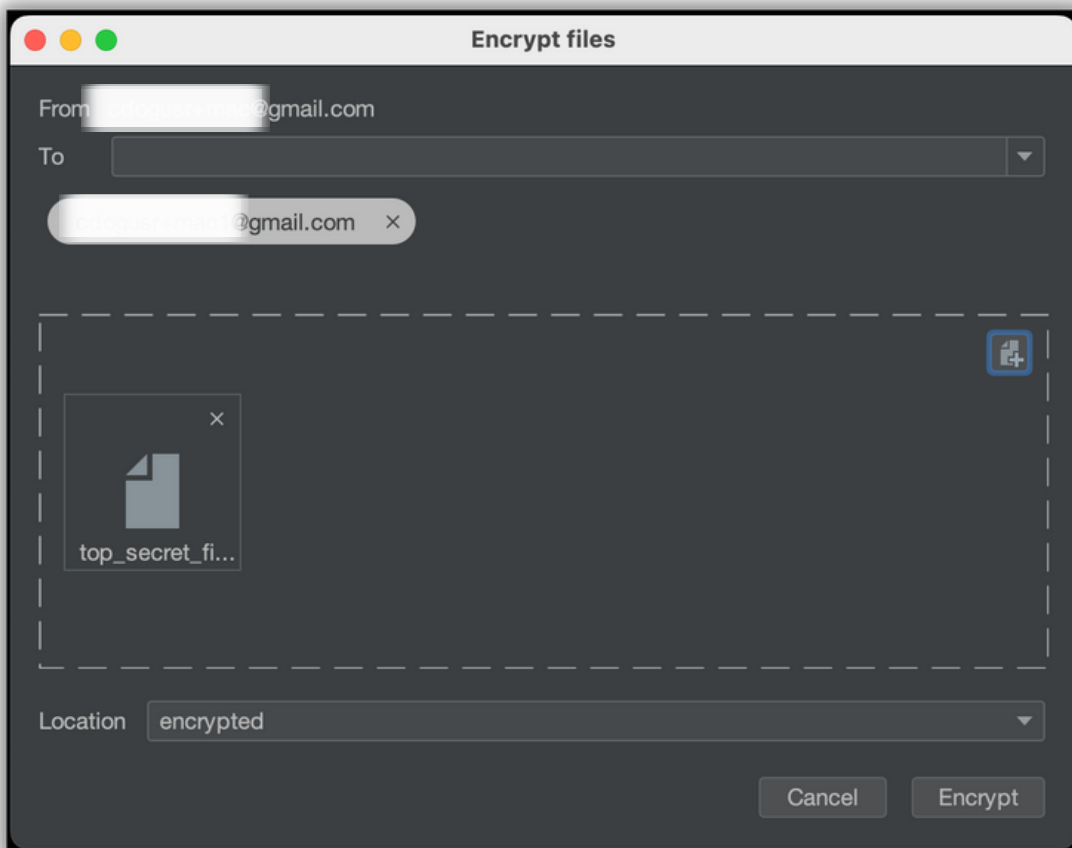
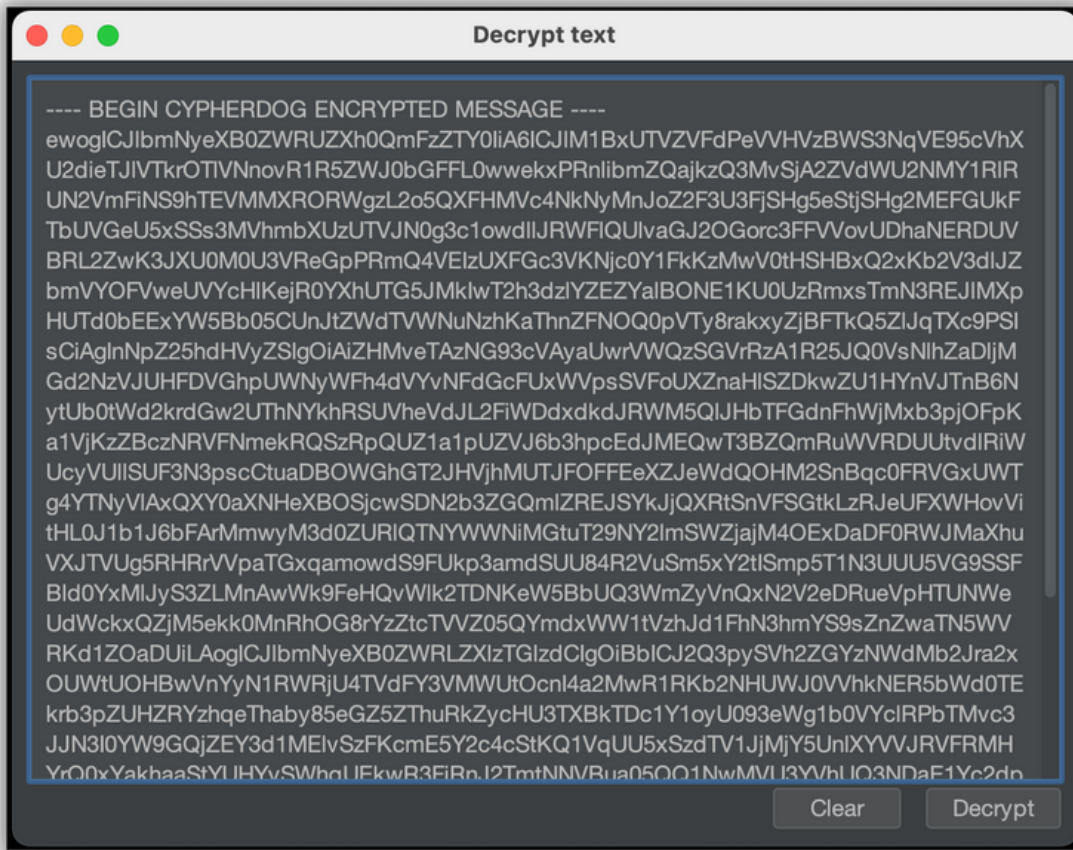


Encrypt / Decrypt (file or text). The main feature of the Cypherdog CE application. Just paste or write down the text you need to encrypt for a specified email address to the “magic window”.

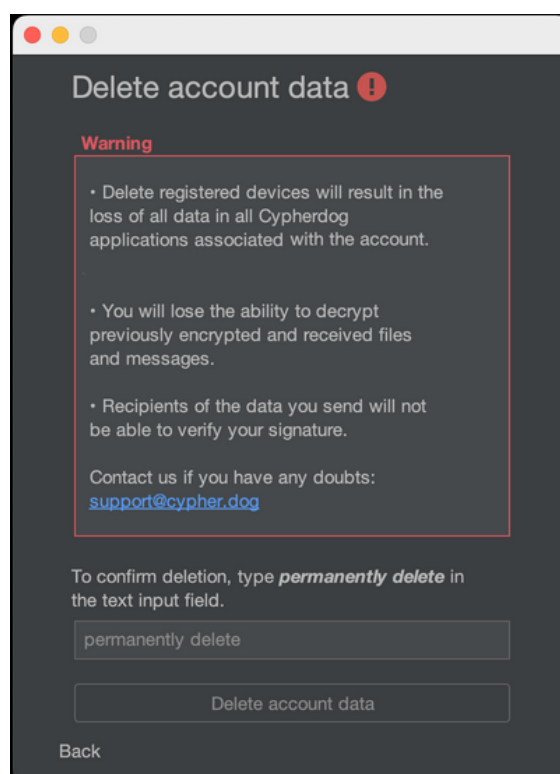
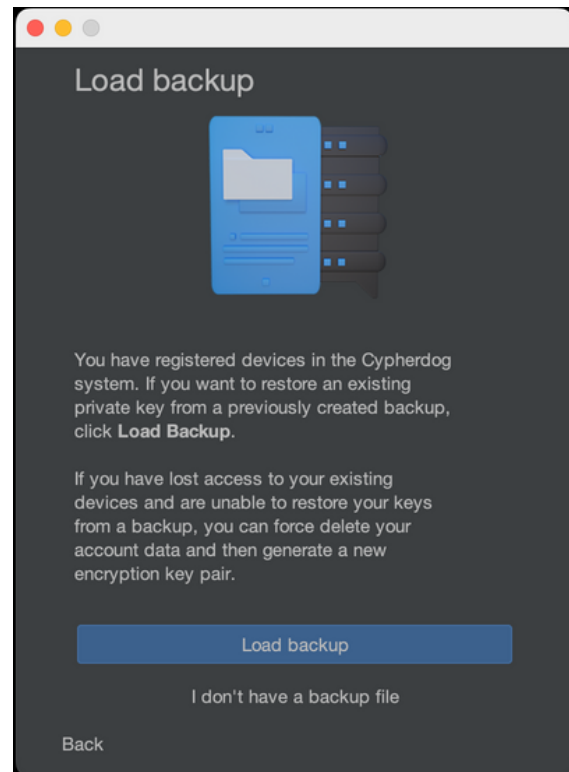
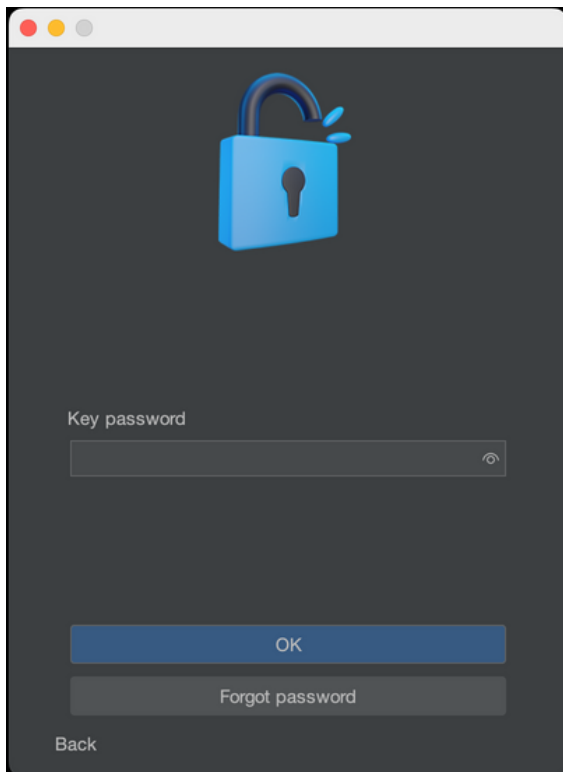
The main feature of the CE SU application. Just paste or write down the text you need to encrypt for a specified email address. You also can encrypt any file or multiple files at once. Please note that only the recipient with a Cypherdog account can decrypt the content of your message or file using asynchronous encryption provided by CE SU. Once encrypted, your message is copied to the system clipboard and can be send via any email client / provider. To decrypt the content, the recipient needs to have trusted keys, an account, and an application provided by Cypherdog. Encrypted message can be easily decrypted directly from Gmail or Outlook via dedicated plugins. Encrypted files have a .cdog extension that has been associated with macOS system during app installation. In addition to the “magic window,” you can encrypt your files directly via contex menu in Files by selecting the appropriate option.

To decrypt the message, just paste to the decryption window (called the magic window) the content of the message or file starting with “---BEGIN CYPHERDOG ENCRYPTED MESSAGE” phrase. Click the “Decrypt” button and read the message.





Forgotten key password. You can recover your account if you forget your key password but remember that you will lose all data in the Cypherdog apps associated with your account. You will lose the ability to decrypt previously encrypted files and messages, the recipients of the messages you send will not be able to verify your signature.





Cypherdog Encryption Plugins

Go to the website <https://www.cypher.dog/cdog-download-the-app-encryption/>

Listed plugins are currently available:

- Google Chrome Plugin for Gmail & Google Suite:

Start Google Chrome

Click the proper plugin from the Cypherdog website or enter URL:

<https://chrome.google.com/webstore/detail/cypherdog-email-encryption/dhcfjhfmgoekhacekiogfhkiiipokegp>

- Microsoft Edge for Gmail & Google Suite:

Start Microsoft Edge

Click the proper plugin from the Cypherdog website or enter URL:

<https://microsoftedge.microsoft.com/addons/detail/cypherdog-encryption/jfnlgjiipnghfngfmdcidngnepjhpbn>

- Microsoft Outlook 2016/2019/2021/Microsoft 365 & Webclient:

a. Click Get Add-ins in the main ribbon in Outlook

b. Click My Add-ins on the left in Add-Ins Window

c. Scroll Down

d. Click Add a custom add-in → Add from URL, paste address:

<https://packer.cdn.cypher.dog/outlook/plugin/manifest.xml> (this address you can copy from <https://www.cypher.dog/cdog-download-the-app-encryption/> after clicking Outlook icon).

- Mozilla Firefox for Gmail & Google Suite:

Start Firefox

Click the proper plugin from the Cypherdog website or enter URL address:

<https://addons.mozilla.org/en-US/firefox/addon/cypherdog-encryption/>

Install ad-on.

- Thunderbird:

Download and install plugin (xpi) to the Thunderbird e-mail client directly from

the link: <https://addons.thunderbird.net/en-US/thunderbird/addon/cypherdog-encryption/>

